

ARJO

MAXI 500

A NEW PASSIVE MOBILE LIFT



POWERED ASSISTANCE FOR CAREGIVER PROTECTION...

From the busiest hospital to the smallest nursing home, caregivers are faced daily with the risk of crippling back pain and injury due to the manual moving and handling of residents. With the right mechanical aids in place, caregiver safety can be improved and injury-related costs reduced. Easy to understand, simple to operate and offering maximum resident comfort, ARJO patient lifts are firmly established as the most appropriate ergonomic choice for today's professional nurse and caregiver.



...AN EFFICIENT SOLUTION FOR EVERYDAY PATIENT HANDLING

Maxi 500 combines proven lifting technology with the latest standards in safety, security and comfort for both resident and caregiver alike. Compatible with a full range of head and body support slings, the electrically-operated *Maxi 500* allows caregivers to give their undivided attention to the resident during patient handling routines.

Using *Maxi 500*, one caregiver can safely and comfortably perform a wide range of everyday patient transfer tasks. And importantly, the caregiver can also raise a person who has fallen to the floor without needing to sit the resident up first.

All power-assisted procedures can be closely controlled by the caregiver. With dual controls the caregiver can choose the most convenient solution for each task by using the handset or the mast control panel.

The adjustable chassis, operated from the handset, can be easily adjusted to allow optimum access for resident transfers involving large chairs, wheelchairs or toilets.

Maxi 500 is also available with a scale option, allowing the caregiver to quickly weigh the resident during a transfer. Efficiently integrating weighing into transfer procedures saves time, eliminates a transfer to a fixed scale and makes the routine easier for resident and caregiver.

Key features

- Spreader bar is available in 2-point loop configuration or ARJO 4-point DPS (Dynamic Positioning System) compatible with a wide range of ARJO slings
- Boom with low reach makes it easy to pick up a person from the floor
- Powered lifting protects caregiver by minimizing physical effort
- Ergonomically designed push/pull handles reduce caregiver strain
- New low-friction castors provide excellent maneuverability and effortless transportation
- Dual controls allow the caregiver to operate lift from the handset or mast control panel
- Soft start/stop circuitry increases resident comfort and security during procedures
- Optional electronic scale mounted on boom is convenient to use and maximizes lifting height



A single caregiver can safely raise a resident from the floor.



The electronic scale option saves the caregiver's valuable time.



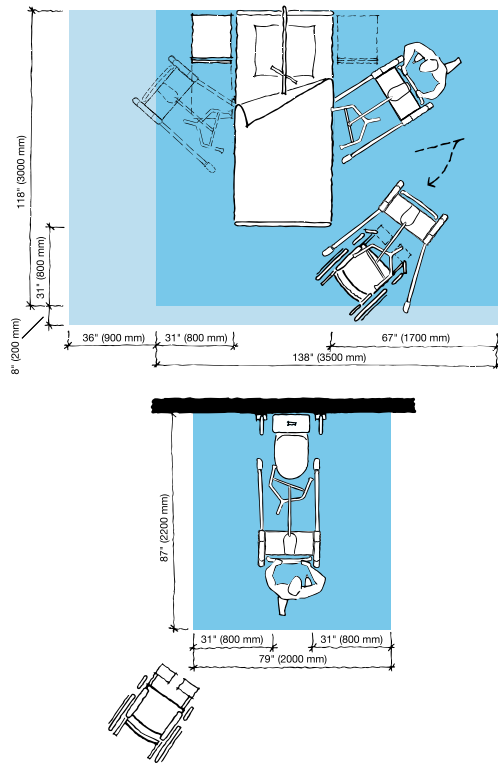
Chassis adjustment enables optimum lift positioning for toileting.



Operate efficiently via the handset or mast control panel. Ergonomically designed push/pull handles for smooth maneuvers.

PRODUCT SPECIFICATIONS

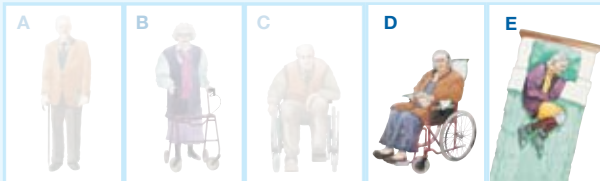
Space requirement



- Blue area shows the minimum working area required for the staff to be able to use the mechanical aids in an ergonomic way from one side.
- Light blue area shows required extension of working area to facilitate activities from either side to provide adequate access for the resident, mechanical aid and assisting caregiver.

Resident Gallery

Suitable for Doris and Emma



- D Doris**, who has no capacity to support herself
 - E Emma**, who is almost completely bedridden and totally dependant
- Please contact ARJO for further information on the Resident Gallery™.

Product information

Max. safe working load	500 lbs (227 kg)
Total weight	116 ½ lbs (53 kg)
Total lift height	52 ½" (1334 mm)
Lifting height	25-72" (660-1830 mm)
Height of chassis	4 ¾" (110 mm)
External width legs closed	25" (635 mm)
Internal width legs open	35 ¾" (910 mm)

Low friction castors, the rear two with brakes

Battery 24V 4Ah

Two batteries and a charger are supplied with each Maxi 500

Protection class Handset IP67
Lifter IPX4

Emergency stop and system failure override

Approvals

The product is in compliance with current legislation and applicable product standards.

Options



THE ELECTRONIC SCALE:

- Integrates weighing into transfer procedures
- Eliminates extra transfer to fixed scale
- Saves caregiver's time and reduces manual handling
- Makes weighing more comfortable for patients

Use only ARJO Designed Parts, i.e. parts specifically designed for the purpose, on equipment and products supplied by ARJO. Our Conditions of Sale specify that ARJO is not liable for injuries attributable to the use of inadequate parts. Continuous development is part of our policy, and we therefore reserve the right to change specifications without notice.

ARJO, Maxi 500 and Resident Gallery are trademarks belonging to the ARJO group.

ARJO

...with people in mind.

ARJO, Inc.
50 N. Gary Avenue
Roselle, Illinois 60172
Phone: 800-323-1245
Fax: 888-594-2756
www.arjo.com

MEMBER OF THE GETINGE GROUP