

# Maxi Twin II

## Parts List

---

**ARJOHUNTLEIGH**  
GETINGE GROUP



# General information

Note. All article numbers starting with **85** indicates that more than one detail is included in the article number. Blue text indicates changes compared to previous manual.

## How to order

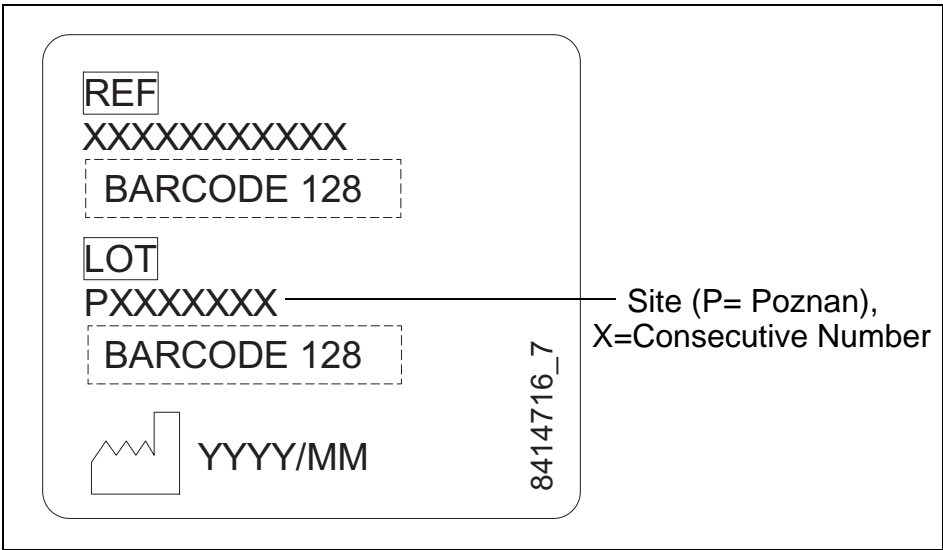
Before ordering spare parts study the exploded view closely and make sure that you note all involved spare parts.

Please note that gaskets and o-rings normally are included in kits and can not be ordered separately.

Note. all article numbers starting with **85** indicates that more than one detail is included in the article number.

When taking contact with ArjoHuntleigh Parts sales always have the following information at hand:

- Correct name of the product. See type label.
- The serial number of the product. See labels.



*Manufacturing country*  
*SE=Sweden*

*Manufacturing works*  
*E=Eslöv*

*Year*

*Week*

*Serial number* ←

**SEE0102001**

Explanation of the serial number:

Product no  
**AR31211-EU**

Serial no  
**SEE0102001**

Made by Arjo in Eslöv, Sweden  
010115

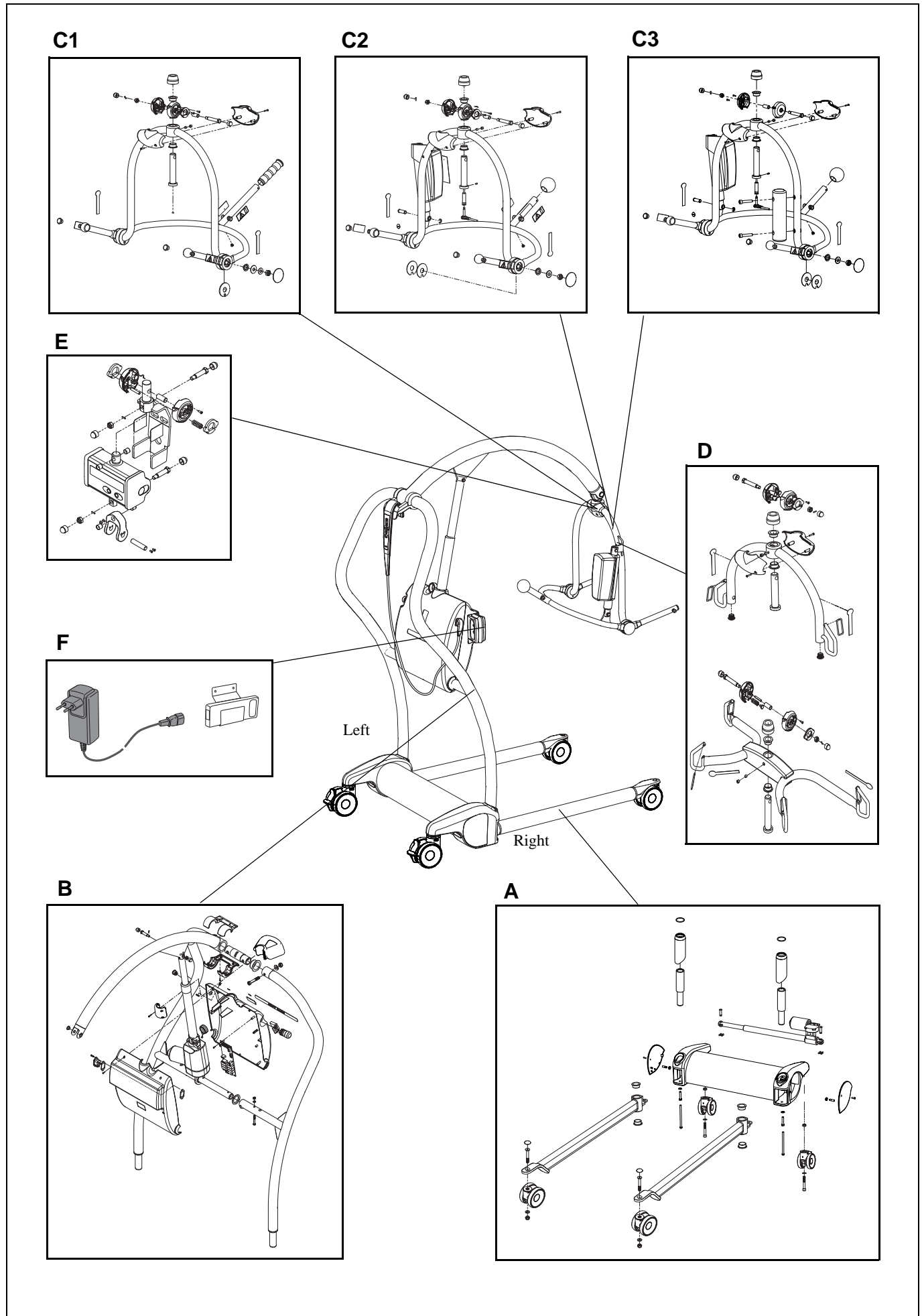
*Example of identification label*

<b>Overview .....</b>	<b>4</b>
<b>A    Leg and Chassis .....</b>	<b>6</b>
<b>B    Mast, Jib and Lift.....</b>	<b>8</b>
<b>C1   Dedicated DPS Spreader Manual .....</b>	<b>10</b>
<b>C2   Dedicated DPS Spreader Powered.....</b>	<b>12</b>
<b>C3   Dedicated DPS Spreader Scale Powered .....</b>	<b>14</b>
<b>D    Dedicated Loops, small, medium, large .....</b>	<b>16</b>
<b>E    Scale .....</b>	<b>18</b>
<b>F    Battery and Battery Charger .....</b>	<b>20</b>
 <b>Preventive Maintenance Parts/Recommended Spares ....</b>	 <b>22</b>
<b>Service Articles and Special Tools .....</b>	<b>23</b>

## *Overview*

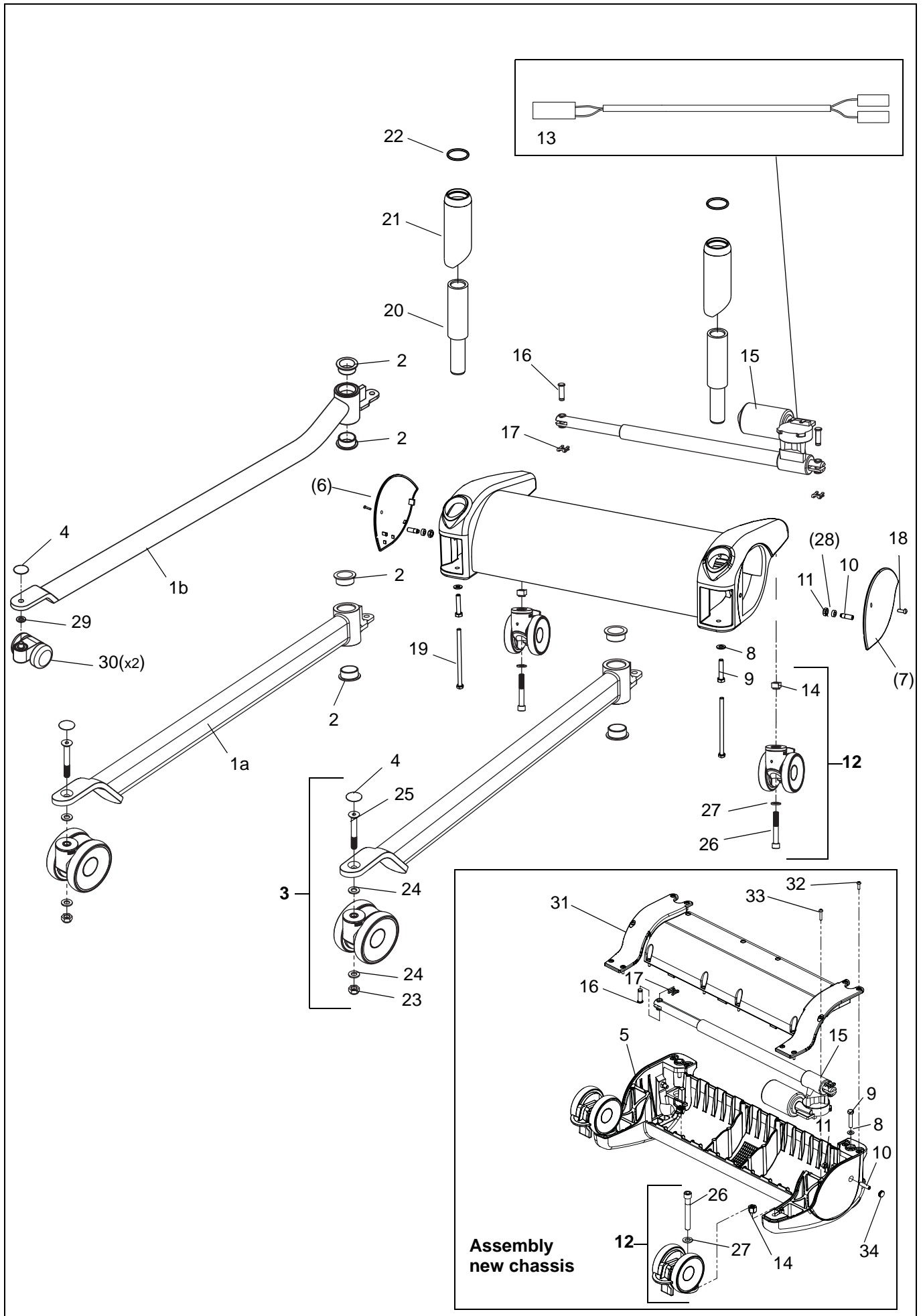
<b>Pos</b>	<b>Description</b>	<b>See page</b>
<b>A</b>	Leg and Chassis	6
<b>B</b>	Mast, Jib and Lift	8
<b>C1</b>	Dedicated DPS Spreader Manual	10
<b>C2</b>	Dedicated DPS Spreader Powered	12
<b>C3</b>	Dedicated DPS Spreader Scale Powered	14
<b>D</b>	Dedicated Loops, Small, medium, large	16
<b>E</b>	Scale	18
<b>F</b>	Battery and Battery Charger	20

# Overview



A <i>Leg and Chassis</i>						
Pos	Art. No.	Qty	Description	From ser. No.	Up to ser. No.	Remarks
	<b>S8561821-031</b>		<b>Leg Assembly standard- incl. pos. 1a-4:</b>			
<b>1</b>	8662038-031	2	Leg standard (a)			New version <b>1005000919</b>
	8662284-031	2	Leg low height (b)			
<b>2</b>	KTX00290.0	4	Bush			
<b>3</b>	<b>8547058</b>	2	<b>Front Castor kit Ø100</b>			
<b>4</b>	KPX11430.20	2	Cap, front castor			
	<b>S8563490-031</b>		<b>Chassis Assembly - castor, actuator which includes pos.: 5, 8-17, 19, 26, 27, 31-34</b>			
	<b>S8261693-031</b>		<b>Chassis Assembly- no actuator, no castors which includes pos.: 5, 10-11, 14, 26, 27, 31-34</b>			
<b>5</b>	<b>8547053-031</b>	1	<b>Chassis, Kit</b>			Incl pos. 8-11 and 34. Version using lid, introduced 1207000416
<b>6</b>	KTX82505-20	1	End cover, right		1207000415	Old version
<b>7</b>	KTX82504-20	1	End cover, left		1207000415	Old version
<b>8</b>	6200005	2	Washer, A4 BRB ISO 7089 8.4x16x1.6			200HV
<b>9</b>	6100892	2	Setscrew, M6S ISO 4017 M8x40 -10.9			Dacro
<b>10</b>	8460420	2	Setscrew 33 mm			
<b>11</b>	6210014	2	Nut A4 M6M ISO 4032 M8 – 80			
<b>12</b>	<b>8547059</b>	2	<b>Rear Castor kit Ø100 braked</b>			Incl pos 14, 26 -27
<b>13</b>	8361423	1	Leg loom 2			
<b>14</b>	8361965 6210229	2	Chassis nut Locking nut A4-ISO 7040 M12-80	1207000416	1207000415	Introduced <b>1003000535</b>
<b>15</b>	KMX82333-00	1	Actuator			
<b>16</b>	KPX11400.0	2	Clevis pin, 10 dia			
<b>17</b>	JX68800.0	2	Safety fastner			
<b>18</b>	6190060	2	Screw MSG LKCS M6 x 12-4.8			
<b>19</b>	6100891	2	Screw DACRO M6S ISO 4014 M8x140			Dacro, With scale
<b>20</b>	8361688-031	2	Mast extension			With scale
<b>21</b>	8361690	2	Cover			With scale
<b>22</b>	6262464	2	O-ring			With scale
<b>23</b>	6210045	2	Nut locking, A4-DIN 985 M10- 80			
<b>24</b>	6200007	4	Washer A4 BRB ISO7089 10.5x20x2-200HV			From <b>1003000535</b> . Also for old versions.
<b>25</b>	6151075	2	Screw FZB MF6S ISO10642 M10x75-8.8			
<b>26</b>	6190589 6190614	2	Screw FZB MC6S ISO 4762 M12x85-8.8 Screw FZB MC6S ISO 4762 M12x90-8.8	1207000416	1207000415	
<b>27</b>	8664227	2	Washer			New version 1304001160
<b>28</b>	8662602	2	Spacer		1207000415	From <b>1103000870</b> . Also for old versions.
<b>29</b>	8662672	2	Washer low castors			
<b>30</b>	<b>700-25110</b>	<b>1</b>	<b>Kit low castors Ø49</b>			Note! 2 castors
<b>31</b>	8662404-031	1	Lid	1207000416		
<b>32</b>	6190612	16	Screw FZB-MRT ISO 14583 M5x16-8.8	1207000416		
<b>33</b>	6190613	2	Screw FZB- MRT ISO 14583 M5x25-8.8	1207000416		
<b>34</b>	8460956-031	2	Cover, grey	1207000416		

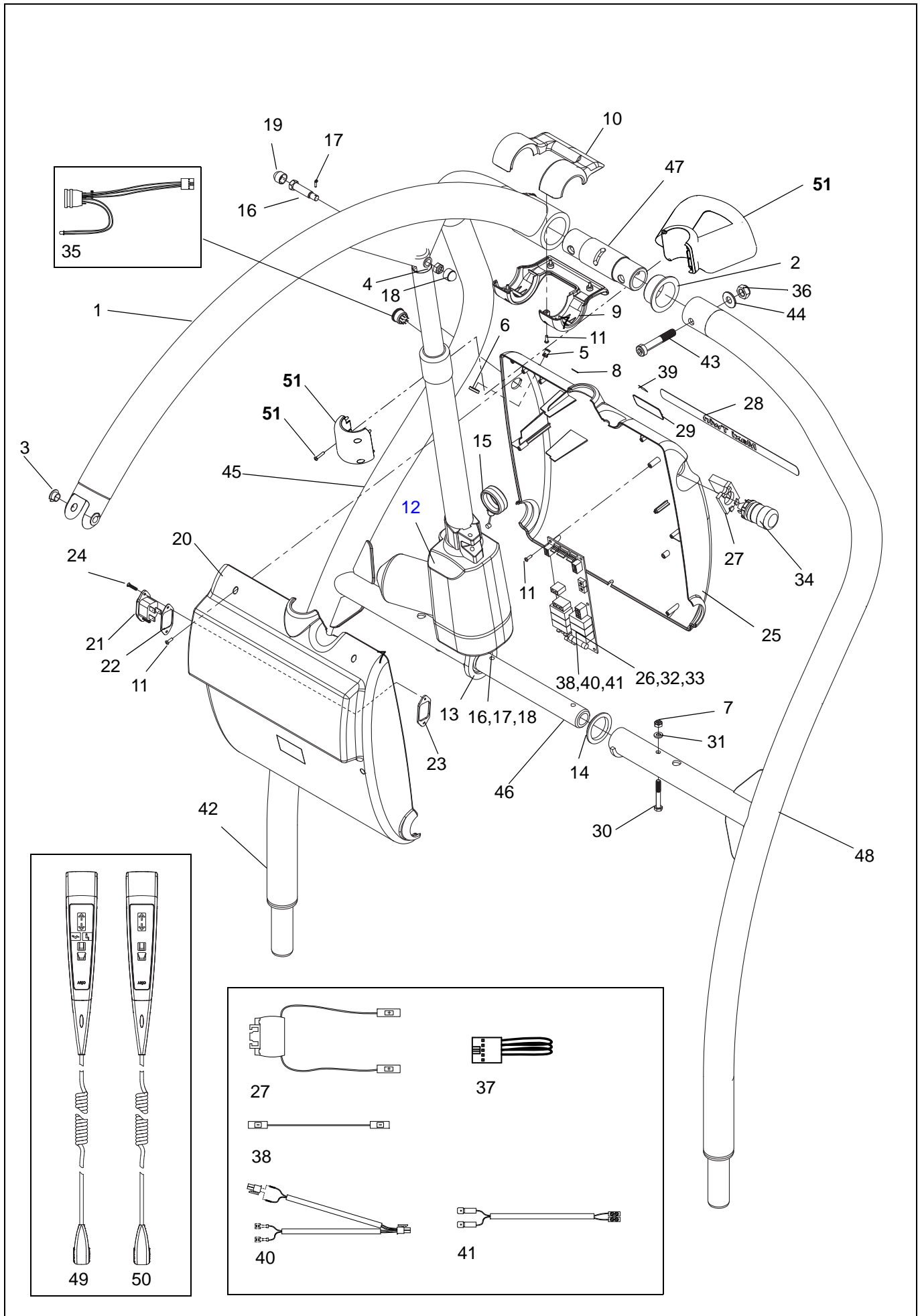
A



<div> <div>B</div> <div>Mast, Jib and Lift</div> </div>						
Pos	Art. No.	Qty	Description	From ser. No.	Up to ser. No.	Remarks
1	8662096-031	1	Jib assembly			New version 1103001283
2	KTX82422-00	2	Bearing			
3	KTX82759-00	2	Bearing			
4	KTX82760-00	1	Bearing			
5	6311332	1	Lens			
6	8461356	1	Ring			
7	6210043	2	Locking Nut A4 DIN 985 M6-80			
8	8418735	1	Label, charge battery			
9	8361058-035	1	Hand control holder, bottom			
10	8361059-035	1	Hand control holder, top			
11	6190542	12	Screw A4 RX PT 4-20x10			
12	S6379241	1	Actuator, LA34			Including pos 15.
13	KTX82424-00	1	Actuator extension bracket			
14	KTX82431-00	2	Bearing			
15	KTX82491-26	1	Emergency release			
16	KTX82745-00	2	Pivot bolt			
17	KTX82746-00	2	Pin, 2 dia x 10 lg			
18	6210044	2	Nut locking A4 DIN 985 M8-80			
19	KTX82756-20	2	Hex cap			
20	KTX82418-24	1	Motor casing, back			New version
21	8458622	1	Socket			
22	8451301	1	Seal			
23	8451284	1	Clamp plate			
24	6190245	2	Screw, A4- MFX ISO 7046 M3x16-80-Z			
25	KTX82419-24	1	Motor casing, front			New version 1307000361 for AH badge
26	8663772	1	PCB			New version 1304000304
27	8360696	1	Safety Stop Loom			
28	8618937	1	Label Maxi Twin			
29	8418701	1	Arjohuntleigh badge			
30	6100645	2	Screw, A4 - M6S ISO 4014 M6 x 45 - 80			
31	6200003	2	Washer, A4 BRB ISO 7089 6.4x12x1.6			200HV
32	6379136	1	Fuse F10AL, 6x32 mm			
33	6379050	1	Fuse T4AL, 5x20 mm			
34	6319516	1	Button			
35	8361410	1	Hand control connector			
36	6210045	2	Nut locking, A4-DIN 985 M10- 80			
37	8358603	1	Bridge connector			
38	8358604	1	Battery wire			
39	KRX05070.0	1	Label emergency lowering			
40	8358599	1	Powered DPS loom 1			
41	8358598	1	Powered DPS loom 2			
42	8418760	1	Data label			Not illustrated
43	6190578	2	Screw FZB MLC6S DIN6912 M10x60-8.8			
44	AX05700.0	2	Washer M10 A2			
45	8261063-031	1	Mast right hand			
46	8360957-031	1	Cross beam joint			
47	8360899-031	1	Top mast joint			
48	8261064-031	1	Mast left hand			
49	8560020	1	6 function Hand control			
50	8560016	1	4 function Hand control			
51	8547061	1	Hand control holder, complete			



B

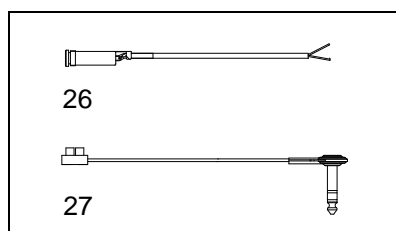
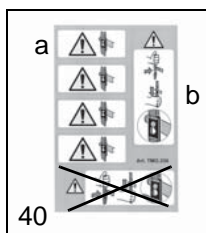
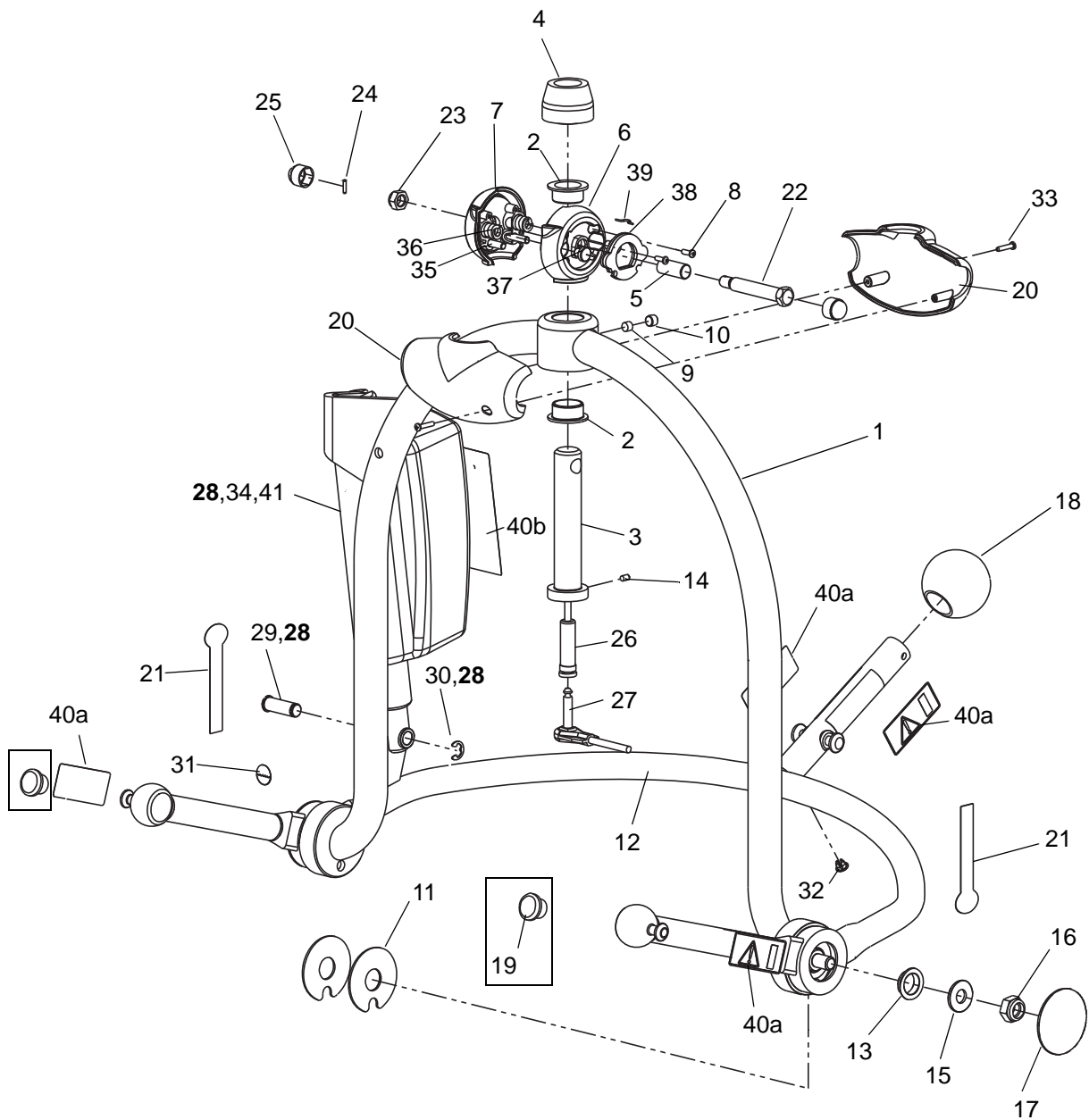


<i>CI</i>		<i>Dedicated DPS Spreader Manual</i>			
Pos	Art. No.	Qty	Description	From ser. No.	Up to ser. No. Remarks
	<b>S8561705-24</b>		<b>DPS Assembly - which includes pos. 1-32:</b>		
<b>1</b>	KTX82438-24	1	Upper lift frame		
<b>2</b>	KTX82421-00	2	Bearing		
<b>3</b>	KTX82477-00	1	Vertical pin		
<b>4</b>	KTX82701-20	1	Pin cover		
<b>5</b>	6306148	1	Bearing		
<b>6</b>	8361233-036	1	Cover, jib left		
<b>7</b>	8361234-036	1	Cover, jib right		
<b>8</b>	6190542	2	Screw A4 RX PT 4-20x10		
<b>9</b>	8459511	1	Lug		
<b>10</b>	KTX82703-00	1	Screw, M8 x 6, skt set		
<b>11</b>	KMX82671-00	2	Friction washer		
<b>12</b>	8662250-24	1	Lift frame		New version 1107000548
<b>13</b>	KPX67540.0	2	Glacier bush		
<b>14</b>	GX20460.0	2	Washer spring disc		
<b>15</b>	MX01450.0	2	Washer		
<b>16</b>	6210045	2	Nut locking, A4-DIN 985 M10- 80		
<b>17</b>	MX01460.20	2	Cap		
<b>18</b>	KPX20100.20	1	Hand grip		
<b>19</b>	6316328	2	End plug	1107000547	For old version lift frame
<b>20</b>	KTX82474-20	2	Cover, spreader bar		
<b>21</b>	8418764	2	Label hanger, SWL 182 kg		
<b>22</b>	KTX82744-00	1	Pivot bolt		
<b>23</b>	6210044	1	Nut locking A4 DIN 985 M8-80		
<b>24</b>	KTX82746-00	1	Pin, 2 x 10 LG		
<b>25</b>	KTX82756-20	2	Hex cap		
<b>26</b>	6190544	2	Screw RX-TP 4-20x16		
<b>27</b>	KMX01080.0	1	Plug		
<b>28</b>	8461232	2	Friction disc		
<b>29</b>	6316320	2	Pin		
<b>30</b>	6305169	2	Spring		
<b>31</b>	8461681	2	Spacer		
<b>32</b>	6319525	1	Label slings		5 labels in one
	<b>8547060</b>	1	<b>Anti-swing kit</b>		<b>Incl. pos.5-8, 22-25, 28-31</b>



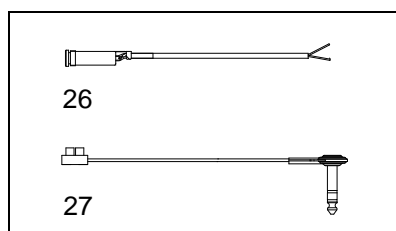
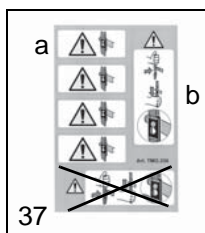
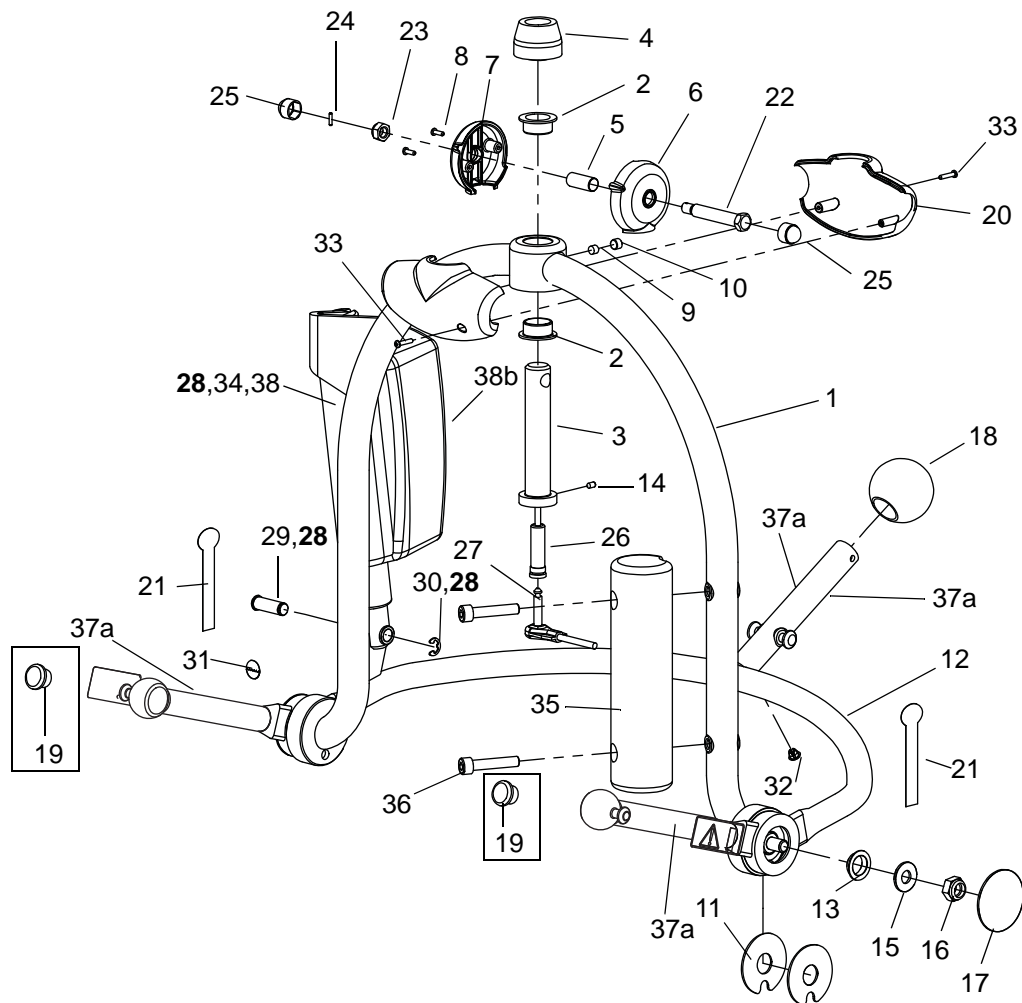
<b>C2</b>		<b><i>Dedicated DPS Spreader Powered</i></b>				
<b>Pos</b>	<b>Art. No.</b>	<b>Qty</b>	<b>Description</b>	<b>From ser. No.</b>	<b>Up to ser. No.</b>	<b>Remarks</b>
	<b>S8561733-24</b>		<b>Powered DPS Assembly - which includes pos.1-40:</b>			
<b>1</b>	KTX82480-24	1	Upper lift frame			
<b>2</b>	KTX82421-00	2	Bearing			
<b>3</b>	KTX82477-00	1	Vertical pin			
<b>4</b>	KTX82701-20	1	Pin cover			
<b>5</b>	6306148	1	Bearing			
<b>6</b>	8361233-036	1	Cover, jib left			
<b>7</b>	8361234-036	1	Cover, jib right			
<b>8</b>	6190542	2	Screw A4 RX PT 4-20x10			
<b>9</b>	8459511	1	Lug			
<b>10</b>	KTX82703-00	1	Screw, M8 x 6, skt set			
<b>11</b>	KPX67640.0	4	Friction washer			
<b>12</b>	8662255-24	1	Lift frame			New version 1102001051
<b>13</b>	KPX67540.0	2	Glacier bush			
<b>14</b>	6190538	1	Set screw OBH-MS6SS ISO 4027 M4x8-21H DriLoc, blue			
<b>15</b>	AX05700.0	2	Washer			
<b>16</b>	6210045	2	Nut locking A4 DIN 985 M10-80			
<b>17</b>	MX01460.20	2	Cap			
<b>18</b>	KPX67120.20	1	Handgrip knob			
<b>19</b>	6316328	2	End plug	1102001050		For old version lift frame
<b>20</b>	KTX82474-20	2	Cover, spreader bar			
<b>21</b>	8418764	2	Label hanger, SWL 182 kg			
<b>22</b>	KTX82744-00	1	Pivot bolt			
<b>23</b>	6210044	1	Nut locking A4 DIN 985 M8-80			
<b>24</b>	KTX82746-00	1	Pin, 2 x 10 LG			
<b>25</b>	KTX82756-20	2	Hex cap			
<b>26</b>	8359836	1	Socket & wire assy			
<b>27</b>	8358597	1	Powered DPS loom 3			
<b>28</b>	<b>KTX82665-00</b>	1	Actuator, LA28			Incl. pos. 29-30
<b>29</b>	KPX67200.0	2	Pin			
<b>30</b>	KPX67210.0	2	'E' clip			
<b>31</b>	LBX05550.0	1	Label water level			
<b>32</b>	KMX01080.0	1	Plug			
<b>33</b>	6190544	2	Screw A4 RX PT 4-20x16			
<b>34</b>	SKMX82687-00	1	Heatshrink			50mm
<b>35</b>	6316320	2	Pin			
<b>36</b>	6305169	2	Spring			
<b>37</b>	8461681	2	Spacer			
<b>38</b>	8461232	2	Friction disc			
<b>39</b>	8461664	1	Cable loop			
<b>40</b>	6319525	1	Label slings			5 labels in one
<b>41</b>	6381048	2	End sleeve			
	<b>8547060</b>	1	<b>Anti-swing kit</b>			<b>Incl. pos.5-8, 22-25, 35-39</b>

C2



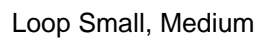
<b>C3</b> <i>Dedicated DPS Spreader Scale Powered</i>						
<b>Pos</b>	<b>Art. No.</b>	<b>Qty</b>	<b>Description</b>	<b>From ser. No.</b>	<b>Up to ser. No.</b>	<b>Remarks</b>
	<b>S8559973-24</b>		<b>Powered DPS Assembly - which includes pos.1-37:</b>			
<b>1</b>	8159975	1	Upper lift frame			
<b>2</b>	KTX82421-00	2	Bearing			
<b>3</b>	KTX82477-00	1	Vertical pin			
<b>4</b>	KTX82701-20	1	Pin cover			
<b>5</b>	6306148	1	Bearing			
<b>6</b>	8359930-20	1	Cover, scale spreader bar			
<b>7</b>	8359931-20	1	Cover, scale spreader bar			With screw holes
<b>8</b>	6190542	2	Screw A4 RX PT 4-20x10			
<b>9</b>	8459511	1	Lug			
<b>10</b>	KTX82703-00	1	Screw, M8 x 6, skt set			
<b>11</b>	KPX67640.0	4	Friction washer			
<b>12</b>	8662255-24	1	Lift frame			New version 1102001051
<b>13</b>	KPX67540.0	2	Glacier bush			
<b>14</b>	6190538	1	Set screw OBH-MS6SS ISO 4027 M4x8-21H DriLoc, blue			
<b>15</b>	AX05700.0	2	Washer			
<b>16</b>	6210045	2	Nut locking, A4-DIN 985 M10- 80			
<b>17</b>	MX01460.20	2	Cap			
<b>18</b>	KPX67120.20	1	Handgrip knob			
<b>19</b>	6316328	2	End plug	1102001050		For old version lift frame
<b>20</b>	KTX82474-20	2	Cover, spreader bar			
<b>21</b>	8418764	2	Label hanger, SWL 182 kg			
<b>22</b>	KTX82744-00	1	Pivot bolt			
<b>23</b>	6210044	1	Nut locking A4 DIN 985 M8-80			
<b>24</b>	KTX82746-00	1	Pin, 2 x 10 LG			
<b>25</b>	KTX82756-20	2	Hex cap			
<b>26</b>	See <i>E:8</i>	1	Socket and wire assy			
<b>27</b>	8358597	1	Powered DPS loom 3			
<b>28</b>	<b>SKTX82665-00</b>	1	Actuator, LA28			Incl. pos. 29-30
<b>29</b>	KPX67200.0	2	Pin			
<b>30</b>	KPX67210.0	2	'E' clip			
<b>31</b>	LBX05550.0	1	Label water level			
<b>32</b>	KMX01080.0	1	Plug			
<b>33</b>	6190544	2	Screw RX-TP 4-20x16			
<b>34</b>	SKMX82687-00	1	Heatshrink			50mm
<b>35</b>	8359732-24	1	Counter weight			
<b>36</b>	6130840	2	Screw MC6S 8x40 A4 DIN 912			
<b>37</b>	6319525	1	Label slings			5 labels in one
<b>38</b>	6381048	1	End sleeve			

C3

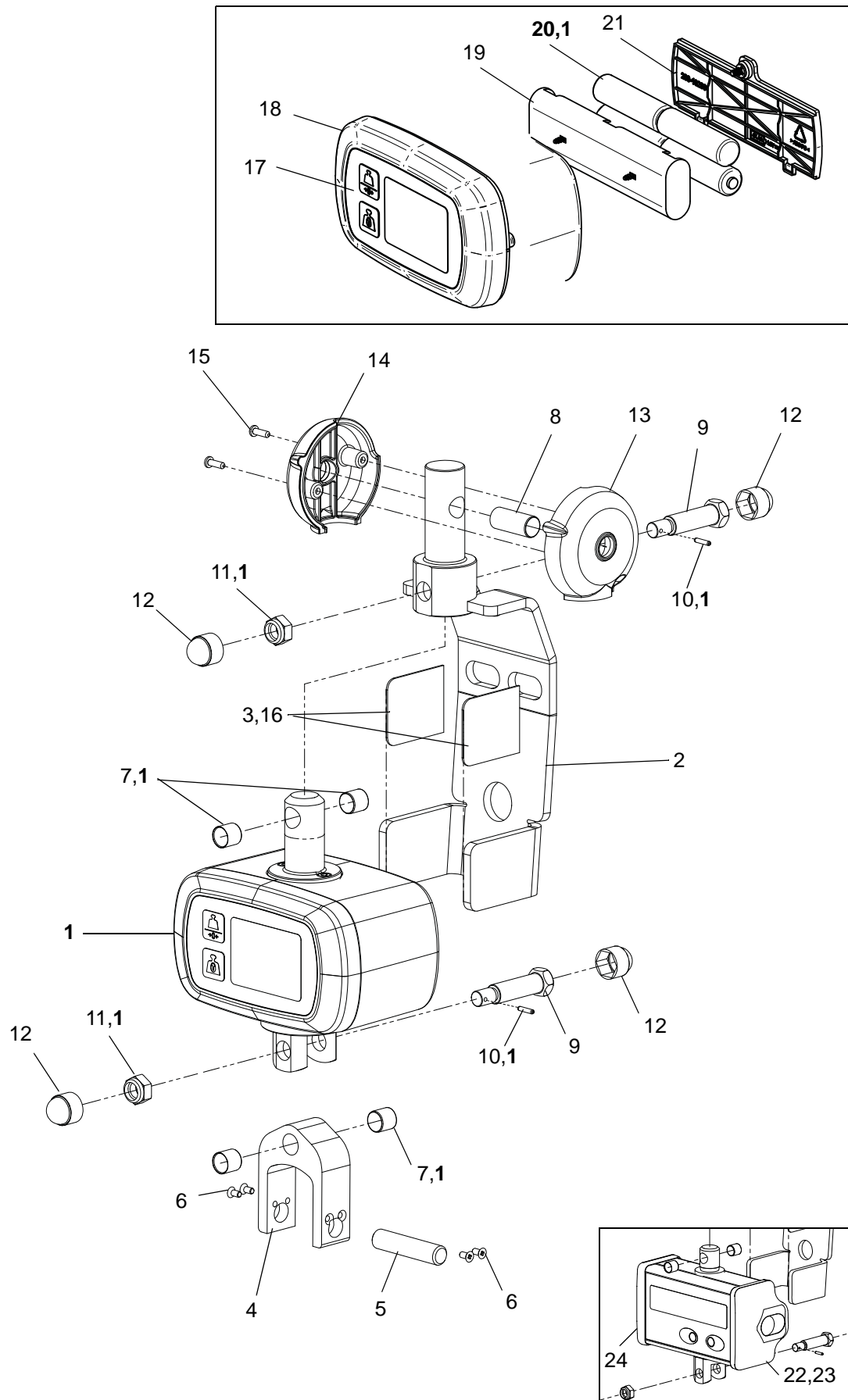


<b>D</b> <i>Dedicated Loops (small, medium and large)</i>						
<b>Pos</b>	<b>Art. No.</b>	<b>Qty</b>	<b>Description</b>	<b>From ser. No.</b>	<b>Up to ser. No.</b>	<b>Remarks</b>
	<b>S8561708-24</b>		<b>Loop, Small, Dedicated, assembly (not illustrated) pos. 1-23</b>			
	<b>S8561710-24</b>		<b>Loop, Medium, Dedicated, assembly - which includes: pos. 1-23</b>			
<b>1</b>	KTX82264-24 KTX82265-24	1	Loop, small, welded assy Loop, medium, welded assy			not illustrated illustrated
<b>2</b>	KTX82421-00	2	Bearing			
<b>3</b>	KTX82477-00	1	Vertical pin			
<b>4</b>	KTX82701-20	1	Pin cover			
<b>5</b>	6306148	1	Bearing			
<b>6</b>	8361233-036	1	Cover, jib left			
<b>7</b>	8361234-036	1	Cover, jib right			
<b>8</b>	KTX82744-00	1	Pivot bolt			
<b>9</b>	6210044	1	Nut locking A4 DIN 985 M8-80			
<b>10</b>	6190542	2	Screw A4 RX PT 4-20x10			
<b>11</b>	KTX82756-20	2	Hex cap, M8			
<b>12</b>	8459263	2/4	Retaining clip			Loop (S,M) 2, Loop (L) 4
<b>13</b>	KTX82746-00	1	Pin, 2 x 10 LG			
<b>14</b>	6190544	2	Screw RX-TP 4-20x16			
<b>15</b>	KTX82703-00	1	Screw, M8 x 6, skt set			
<b>16</b>	8459511	1	Lug			
<b>17</b>	6316320	2	Pin			
<b>18</b>	6305169	2	Spring			
<b>19</b>	8461681	2	Spacer			
<b>20</b>	8461232	2	Friction disc			
<b>21</b>	KTX05210.0	2	End plug			Loop (S,M)
<b>22</b>	KTX82474-20	2	Cover, spreader bar			Loop (S,M)
<b>23</b>	8418764	2	Label hanger, SWL 182 kg			Loop (S,M)
	<b>S8561709-24</b>		<b>Loop, Large, Dedicated, assembly - which includes pos 2-22, 24-25:</b>			
<b>24</b>	KTX82554-24	1	Loop, large, welded assy			Loop (L)
<b>25</b>	8418765	2	Label loop large, SWL 182 kg			Loop (L)
	<b>8547060</b>	1	<b>Anti-swing kit</b>			<b>Incl. pos.5-11, 13, 17-20</b>

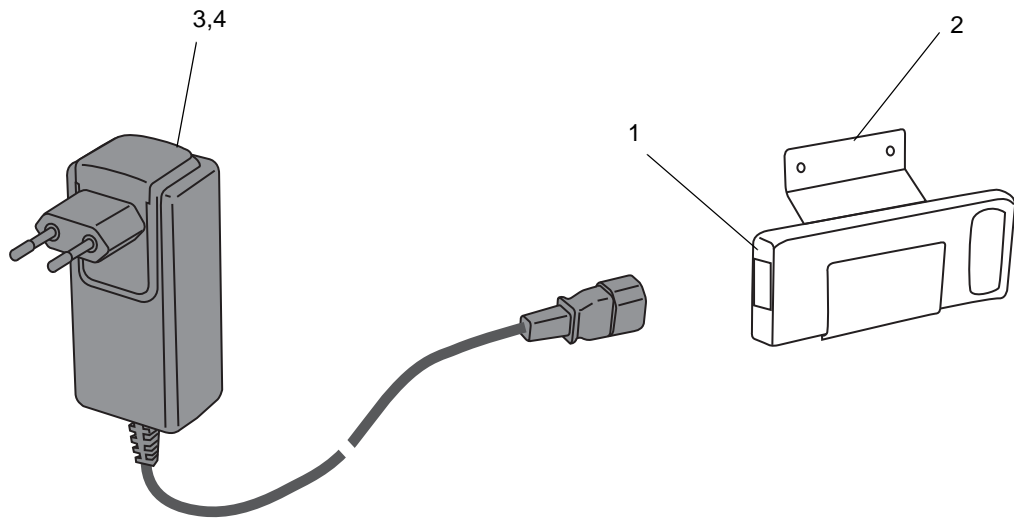




<i>E</i>		<i>Scale</i>			
Pos	Art. No.	Qty	Description	From ser. No.	Up to ser. No. Remarks
1	CFA3000-03A CFA3000-03U	1	Kit Maxi Twin Scale Verified Kit Maxi Twin Scale Not Verified		Complete new scale on old article number from serial number PO399949. Including pos 7,10,11,20
2	8259729-20	1	Scale bracket		
3	8459730	2	Friction plate		
4	8259726	1	Fork		
5	8459727	1	Fork axle		
6	6190562	4	Screw MFX 3x6 A4		
7	6306149	4	Bearing		4 pcs. included in pos 1
8	6306148	1	Bearing		
9	KTX82745-00	2	Pivot bolt		
10	KTX82746-00	2	Pin, 2 x 10 LG		3 pcs. included in pos 1.
11	6210044	2	Nut locking A4 DIN 985 M8-80		3 pcs. included in pos 1.
12	KTX82756-20	4	Hex cap		
13	8359737-20	1	Cover, scale bracket		
14	8359447-20	1	Cover, scale bracket		With screw holes
15	6190542	2	Screw A4 RX PT 4-20x10		
16	6320233	1m	Adhesive tape 3M VHB 4905F		
17	001-16095	1	Membrane Scl Suspended Typ1		Purple
18	700-00005	1	Kit Front Cover		Purple Membrane
19	700-00003	1	Kit Battery Holder 4AA		
20	HMX1459	1	Kit Battery 1.5v "AA"		4 pcs. Included in pos 1
21	700-00004	1	Kit Battery cover		
22	6907940	1	Battery holder		(Old scale only)
23	6370832	1	Cover right		Battery side, including screw (old scale only)
24	6370833	1	Cover left		Including screw (old scale only)

**E**

<i>F Battery and Battery Charger</i>						
Pos	Art. No.	Qty	Description	From ser. No.	Up to ser. No.	Remarks
1	NEA 0100-083	1	Battery			
2	8350891-031	1	Battery Holder			
3	NEA 8000-WW	1	Battery Charger			
4	NEA 8000-AU	1	Battery Charger			Also for Japan

***F***

# Maxi Twin

## Preventive Maintenance Parts/Recommended Spares

Preventive Maintenance Parts	Part number	Number of Maxi Twin*		Page
		1	5	
Front Castor kit, Ø100mm	8547058	2	10	A:3
Rear Castor kit, braked Ø100mm	8547059	2	10	A:12

Recommended Spares	Part number	Number of Maxi Twin*		Page
		1	5	
4 function Hand control	8560016	1	2	B:50
6 function Hand control	8560020	1	2	B:50
Actuator, LA34	S6379241	1	1	B:12
Battery	NEA 0100-083	1	2	F:1
Bearing	KTX82431-00	2	4	B:14
Bearing	KTX82421-00	2	4	C:2,D:2
Bearing	6306148	1	2	C:5,D:5,E:8
Cap	KTX82756-20	2	4	B:19,C:25, D:11,E:12
Clevis pin, 10 dia	KPX11400.0	1	1	A:16
Cover, Jib right (with screw holes)	8361234-036	1	2	C1:7,C2:7 D:7
Cover, Jib left	8361233-036	1	2	C1:6,C2:6 D:6
Cover, scale bracket	8359737-20	1	2	E:13
Cover, scale bracket (with screw holes)	8359447-20	1	2	E:14
Cover, scale spreader bar	8359930-20	1	2	C3:6
Cover, scale spreader bar (with screw holes)	8359931-20	1	2	C3:7
Cover, spreader bar	KTX82474-20	2	4	C:20,D:22
Fuse	6379136	1	2	B:32
Fuse	6379050	1	2	B:33
Hand control holder, bottom	8361058-035	1	2	B:9
Hand control holder, top	8361059-035	1	2	B:10
Nut locking A4 DIN 985 M8-80	6210044	3	6	B:18 C:23 D:9 E:11
PCB	8663772	1	1	B:26
Pin, 2 x 10 LG	KTX82746-00	2	4	B:17,C:24 D:13,E:16
Pivot bolt, actuator and scale	KTX82745-00	2	4	B:16,E:9
Pivot bolt, jib	KTX82744-00	1	2	C:22,D:8
Powered DPS loom 3	8358597	1	2	C2,C3:27
Retaining clip (Not for DPS)	8459263	4	20	D:12
Safety fastner	JX68800.0	2	4	A:17
Vertical pin	KTX82477-00	1	1	C:3,D:3

\*For larger numbers of Maxi Twin than 5 add the same number of parts as between 1 and 5 for every increase of 5 Maxi Twin.  
Note. If the same quantity is recommended for 1 and 5 Maxi Twin's no addition should be done before an increase of 15.

## Maxi Twin

### Service Articles and Special Tools

---

Service Articles	Type	Quantity	Part number
Shell Cassida RLS2	Lubrication	400ml cartridge	6907792
Loctite 243	Locking	10ml	6950607
Loctite 495	Glue	20g	6311090
Cyberbond 2028	Glue	50g	6311451
Touch-up paint	Grey	20ml	6951007-031
Touch-up paint	Light blue (014)	20ml	6951007-024
CX-80 SG	Lubrication	40g	RM1151

Special Tools	Part number
Angle Plate	04063
Battery Condition Tester (Electric version)	8662950
Spare Part bulb for 8662950	S6311425
Clamp for friction pads	8361671
Clip for friction pads	8461669
Leg Measurement Tool	04064
Load Test Equipment: Eye Hook	ST240
Load Test Equipment: Hand control and Load cell	ST164
Load Test Equipment: Hinge Beam	ST239
Load Test Equipment: Load Cell Housing	ST241
Load Test Equipment: Strap	2xST171
Load Test Equipment: Strap (long)	2xST166
Load Test Equipment: Strap (short)	2xST165
Logger	8559816
Sling Clip Gauge	ST331
Special Tool	ST252

