



Your 5-day*¹
window for timely
and effective
pressure injury
intervention

PRESSURE INJURY PREVENTION - EARLY & TARGETED INTERVENTIONS

Provizio® SEM Scanner

Pressure injuries are one of the largest unsolved healthcare challenges today²⁻⁵

Why are pressure injuries difficult to prevent?



INVISIBLE

Inflammatory changes in the skin and underlying tissues may begin 3 to 10 days before becoming visible.⁷



RAPID

Injuries can develop quickly with irreversible damage occurring in vulnerable patients within a matter of hours.^{8,9}

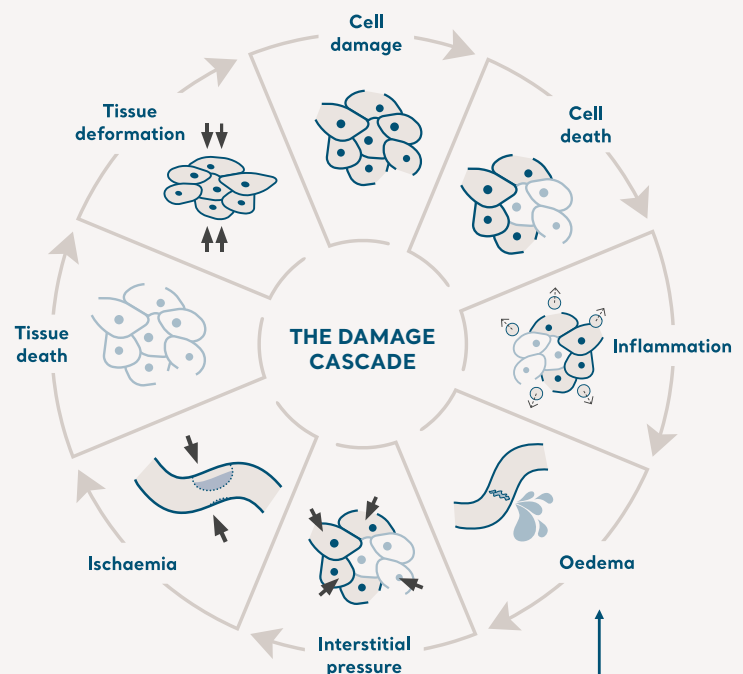
As pressure damage can occur quickly and become evident on the skin only days after development, Risk Assessment Tools (RATs) are key in the prevention of pressure injuries. However, these come with limitations such as subjective interpretation and low predictive value.⁶

A new paradigm in early pressure injury risk identification

The role of sub-epidermal moisture (SEM) in the damage cascade

- Inflammation increases vasodilation and permeability of blood vessels, leading to leakage of plasma and fluid creating sub-epidermal moisture (SEM) in the tissue.⁸
- SEM provides a biomarker alerting clinicians before visible damage manifests at the skin surface.¹

Sub-epidermal moisture (SEM) is recognised in the international guideline recommendations 2.6 and 2.7 since 2019



SUB-EPIDERMAL MOISTURE (SEM)

SEM cannot be detected through visual skin assessment, and is at the microscopic stage of damage.

Provizio SEM Scanner

The Provizio SEM Scanner identifies increased risk of pressure injuries at an anatomical site 5 days*¹ earlier than visual risk assessment, regardless of skin tone.¹⁰

The Provizio SEM Scanner is a non-invasive device with rapid results that compares SEM measurements across an anatomical site and reports the difference between values at the inflamed vs. healthy tissue site - this is the SEM Delta (Δ SEM). The device can automatically transfer data to the comprehensive Gateway Dashboard for patient, ward and facility management purposes.



Objective PI risk assessment on admission and 5 days*¹ earlier, regardless of skin tone.¹⁰

Enable timely, anatomically-specific and targeted interventions.

Digitally enhance the PI care pathway and outcome.

Achieve significant reductions across care settings

Real-world evidence gathered via a number of evaluations across markets:

47%

in hospice settings¹¹

90%

in acute care settings**¹¹

27%

in community care¹¹



A $SEM\Delta \geq 0.6$ at an anatomical site indicates an increased risk of pressure injury.



Top 100
Listed as one of the
100 Best Inventions
in 2020 by Time

Start your Evaluation Process to help reduce pressure injury incidence rates.

Book a call with your Arjo Rep today.
Visit www.arjo.com/provizio

Scan the QR code to view the product webpage for videos, specifications, training guide, gateway flyer and more.



www.arjo.com/provizio

Only Arjo designed parts, which are designed specifically for the purpose, should be used on the equipment and products supplied by Arjo. As our policy is one of continuous development we reserve the right to modify designs and specifications without prior notice. ® and ™ are trademarks belonging to the Arjo group of companies. Copyright, trademarks and logos are the intellectual property of Bruin Biometrics LLC, this includes the following: Provizio® SEM Scanner and SEM Scanner® Bruin Biometrics LLCs copyright materials cannot be used or reproduced without Bruin Biometrics LLCs written consent.
© Arjo, 2021

At Arjo, we believe that empowering movement within healthcare environments is essential to quality care. Our products and solutions are designed to promote a safe and dignified experience through patient handling, medical beds, personal hygiene, disinfection, diagnostics, and the prevention of pressure injuries and venous thromboembolism. With over 6000 people worldwide and 60 years caring for patients and healthcare professionals, we are committed to driving healthier outcomes for people facing mobility challenges.

Arjo AB · Hans Michelsengatan 10 · 211 20 Malmö · Sweden · +46 10 335 4500

www.arjo.com

* Median

** Weighted average

References:

1. Okonkwo H, Bryant R, Milne J et al. A blinded clinical study using subepidermal moisture biocapacitance measurement device for early detection of pressure injuries. *Wound Repair & Reg* 2020;1-11.
2. Li Z, Lin F, Thalib L, Chaboyer W. Global prevalence and incidence of pressure injuries in hospitalised adult patients: A systematic review and meta-analysis. *Int J Nurs Stud*. 2020 May.
3. Moore Z, Avsar P, Conaty L, Moore D.H, Patton D, & O'Connor T (2019) The prevalence of pressure ulcers in Europe, what does the European data tell us? *Journal of Wound Care*.
4. Berlowitz D, Lukas CV, Parker V, Niederhauser A, Silver J, Logan Cet al. Preventing pressure ulcers in hospitals: a toolkit for improving quality of care [Internet]. Rockville (MD): Agency for Healthcare Research and Quality; 2014 [cited 2018 Oct 2].
5. Anthony, D. M., Alosoumi, D., and Safari, R. (2019). 'Prevalence of pressure ulcers in long term care: A global review', *Journal of Wound Care*, 28(11), pp. 1-7. DOI: 10.12968/jowc.2019.28.11.702.
6. Moore ZEH, Patton D. Risk assessment tools for the prevention of pressure ulcers. *Cochrane Database of Systematic Reviews* 2019, Issue 1. Art No.:CD006471.DOI:10.1002/14651858.CD006471.Pub4.
7. Moore Z, Patton D, Rhodes SL, O'Connor T. Subepidermal moisture and bioimpedance: a literature review of a novel method for early detection of pressure-induced tissue damage (pressure ulcers). *Int Wound J* 2017; 14:331-337.
8. Gefen A (2018) The future of pressure ulcer prevention is here: Detecting and targeting inflammation early. *EWMA Journal* 2018, 19(2):7-13.
9. Gefen, A (2008). How much time does it take to get a pressure ulcer? *Integrated evidence from human, animal and invitro studies*. *Ostomy Wound Manage*. 2008b; 54(10): 26-8,30-5.
10. Bates-Jensen BM, McCreath HE, Pongquan V. Sub-epidermal moisture is associated with early pressure ulcer damage in nursing home residents with dark skin tones: pilot findings. *J Wound Ostomy Continence Nurs*. 2009;36(3):277-284.
11. Burns M (2020). Real World Evidence Accepted and presented at EWMA Conference.