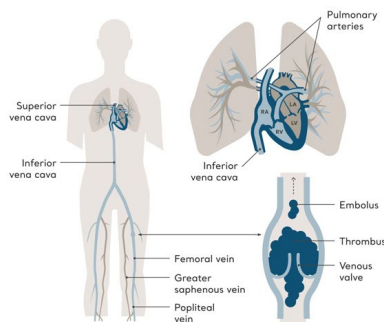


# VTE - Arjo Clinical Education (ACE)



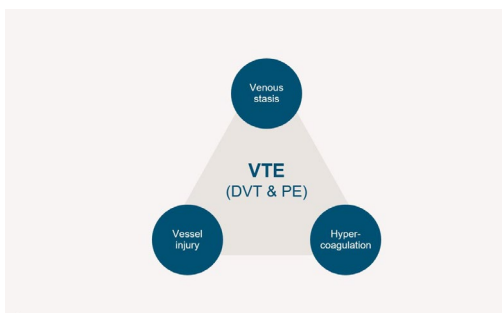
The VTE ACE program is a nationally certified (A.C.N.) training course aimed at clinicians involved in the management and treatment of patients who are at risk of developing a VTE event which is a serious yet largely preventable condition. These sessions will explore best practice preventative measures and review current risk assessment and VTE guidelines to help reduce VTE events within your facility.

**REGISTER  
FOR ACE**



## Module 1: Anatomy and Pathophysiology

- circulatory system and normal venous flow, development and long term consequences of VTE events and haemostasis



## Module 2: Economic humanitarian burden of VTE and associated risk factors

- incidence and prevalence of VTE events, patient risk factors and diagnostic techniques



## Module 3: Strategies for Prevention

- pharmacological and mechanical prophylaxis, VTE risk assessment, guidelines and best practice recommendations

For more information please email:  
[enquiries.au@arjo.com](mailto:enquiries.au@arjo.com)