

## Assemble mattress overlay or mattress replacement and pump

<p><b>1</b></p> <ul style="list-style-type: none"> <li>• tubeset at foot end</li> <li>• CPR at head end</li> <li>• cells facing up</li> </ul> <p><b>Arjo logo:</b> arjo Auralis</p> <p>Zip the protective cover over the mattress. Arjo logo visible at the foot end.</p>	<p><b>2</b></p> <p><b>Mattress overlay:</b> Place on top of base mattress. Secure with 4 fixing straps.</p> <p><b>Mattress replacement:</b> Place on bed base. Attach the 8 securing straps to moving parts of bed frame (+ 3 at head end for Auralis Plus only)</p>	<p><b>3</b></p> <p>CPR unit is clicked into closed position.</p>
---	--	--

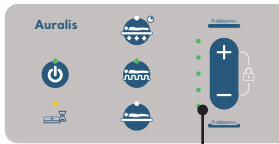
<p><b>3</b></p> <p>CPR unit is clicked into closed position.</p>	<p><b>4</b></p> <p>Hang the pump at the foot end of the bed.</p>	<p><b>5</b></p> <p>Connect the tubeset.</p>	<p><b>6</b></p> <p>Place cable in the cable management. Close the flap around the cable with the press studs.</p> <p>Connect power cable to power source.</p>
--	--	---	---

## Assemble seat cushion and pump

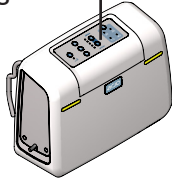
<p><b>1</b></p> <p><b>Seat cushion:</b> Place on chair surface. Use the fixing straps to attach.</p> <ul style="list-style-type: none"> <li>• cells facing up</li> <li>• tubeset at front right corner</li> <li>• cells horizontal across chair, V-shape towards front</li> </ul>	<p><b>2</b></p> <p>Place pump on floor, cable under chair, tubeset placed alongside chair.</p> <p>Connect the tubeset.</p> <p>Connect power cable to power source.</p>
---	--

## Start the Auralis system

1



10s



When the pump is connected to a power source it runs a self check:  
Beep – 10 seconds – 2 beeps – ready to use.

Press and hold Run/Standby button.

The following indicators are shown:

- Run/Standby
- Wait indicator
- Alternating mode button
- Comfort control indicator
- Battery charge indicator
- Green indicators on the front of the pump

2



15 min

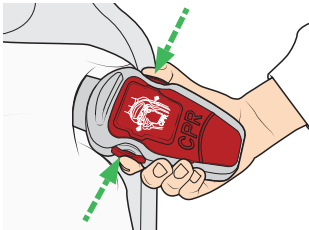
Once the Wait indicator turns off, place bed sheet on mattress. Make sure that the CPR rapid deflation unit is clearly visible.

Place patient on the mattress or seat cushion.

Alternating mode is set by default.

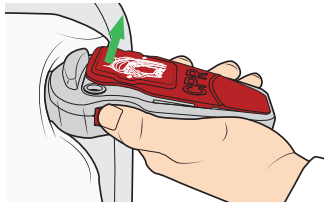
## CPR rapid deflation unit

1

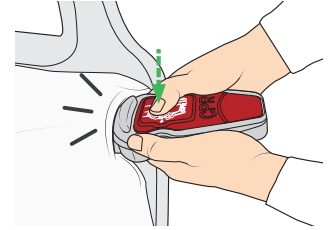


**Activate:** Press both CPR release buttons simultaneously.

2



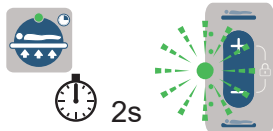
Make sure the front part is open. The air evacuates rapidly.



**Reset:** Press down the open part until it clicks into closed position.

## Autofirm mode

1



**Activate:** Press and hold the button. Comfort indicators flash and mattress inflates to Autofirm.

2



Pressure reached – Autofirm and Control comfort indicators turn to constant.



**Deactivate:** Press and hold the button or select another mode.



**Extend:** Press button to extend 5 minutes. Max. 30 minutes.

If not extended, pump goes back to previous mode.

## Alternating mode, default setting



**Activate:**

Press button, the Alternating mode indicator is shown. Adjacent cells inflate and deflate on a 10 minute cycle.



**Deactivate:**

Select Reactive CLP or Autofirm mode.

If no further therapy is required, remove patient from the surface and turn off the pump.

## Reactive CLP mode



### Activate:

Press and hold the button.

Reactive CLP mode indicator is shown.

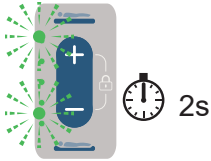


### Deactivate:

Select Alternating mode or Autofirm mode.

If no further therapy is required, remove patient from the surface and turn off the pump.

## Lock out mode

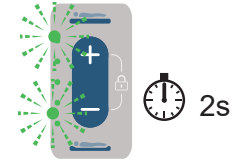


### Locking:

Push and hold the comfort control buttons simultaneously.

Comfort control indicators flashes.

Pump is now locked.



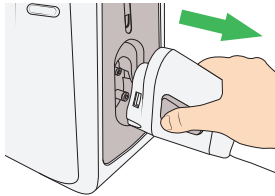
### Unlocking:

Push and hold the comfort control buttons simultaneously.

Comfort control indicators flashes.

Pump is now unlocked.

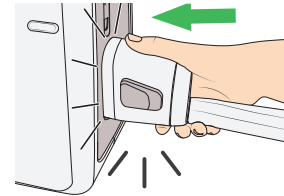
## Transport mode (mattresses only)



### Activate:

Press side buttons simultaneously and remove tubeset.

The mattress supports the patient for up to 12 hours.



### Deactivate:

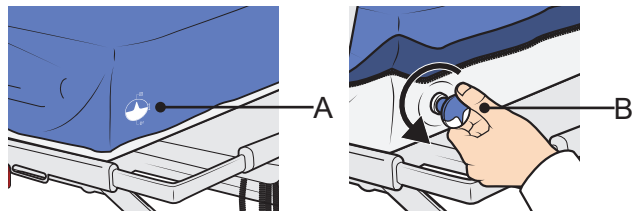
Reconnect the tubeset.

The pump goes back to the previous mode.

## Bolster inflation and deflation (Auralis Plus only)

### Bolster configurations:

- One bolster inflated (left or right)
- Both bolsters inflated (left and right)
- Both bolsters deflated (left and right)



Risk of injury or discomfort  
Deactivate transport mode

### Bolster inflation:

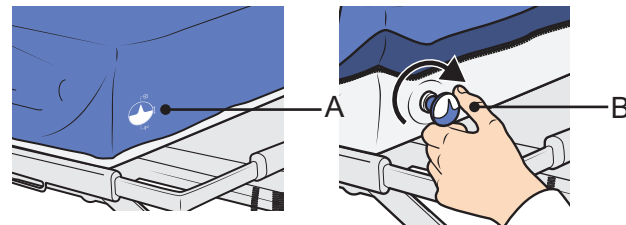
Locate the valve symbol (A).

Turn the valve (B) on the bolster fully anticlockwise

Repeat on the other bolster, if required.

Leave to inflate for 8 minutes.

**Note:** Extended bed frame width before inflating the bolsters.



### Bolster deflation:

Locate the valve symbol (A).

Turn the valve (B) on the bolster fully clockwise

Repeat on the other bolster, if required.

Leave to deflate for 5 minutes.

**Note:** Deflate bolsters before reducing the bed frame width.