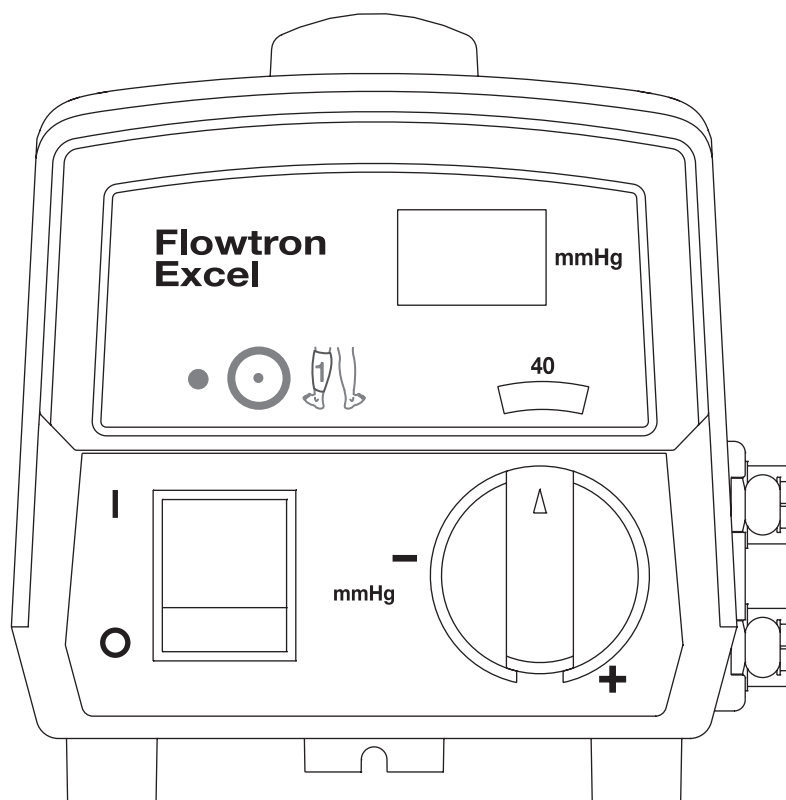


Flowtron Excel



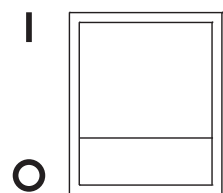
Single leg button and indicator

If a single garment is attached:
Press the button to prevent the alarm system from indicating a fault.
There is a beep and the yellow indicator illuminates.



Garment pressure display

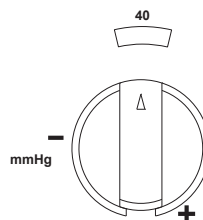
Indicates the actual pressure delivered to the garments.



Mains power switch

On = I (illuminates green)
Off = O

At start up the pump performs a 2 second self test where pressure display, indicators and alarm are tested.



Pressure control

Increase pressure = turn clockwise
Decrease pressure = turn counter clockwise
Pressure range: 30 to 60 mmHg.