

Maxi Twin

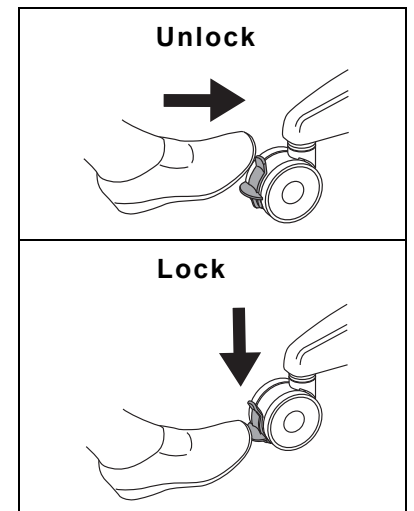
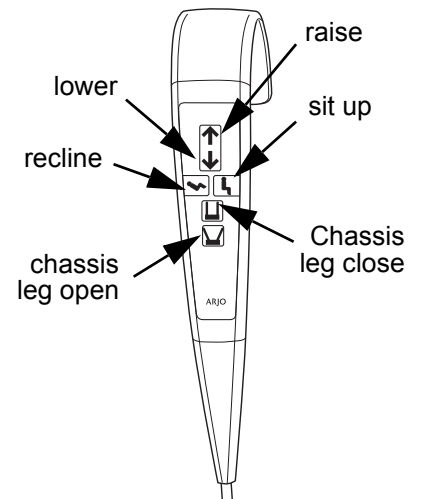
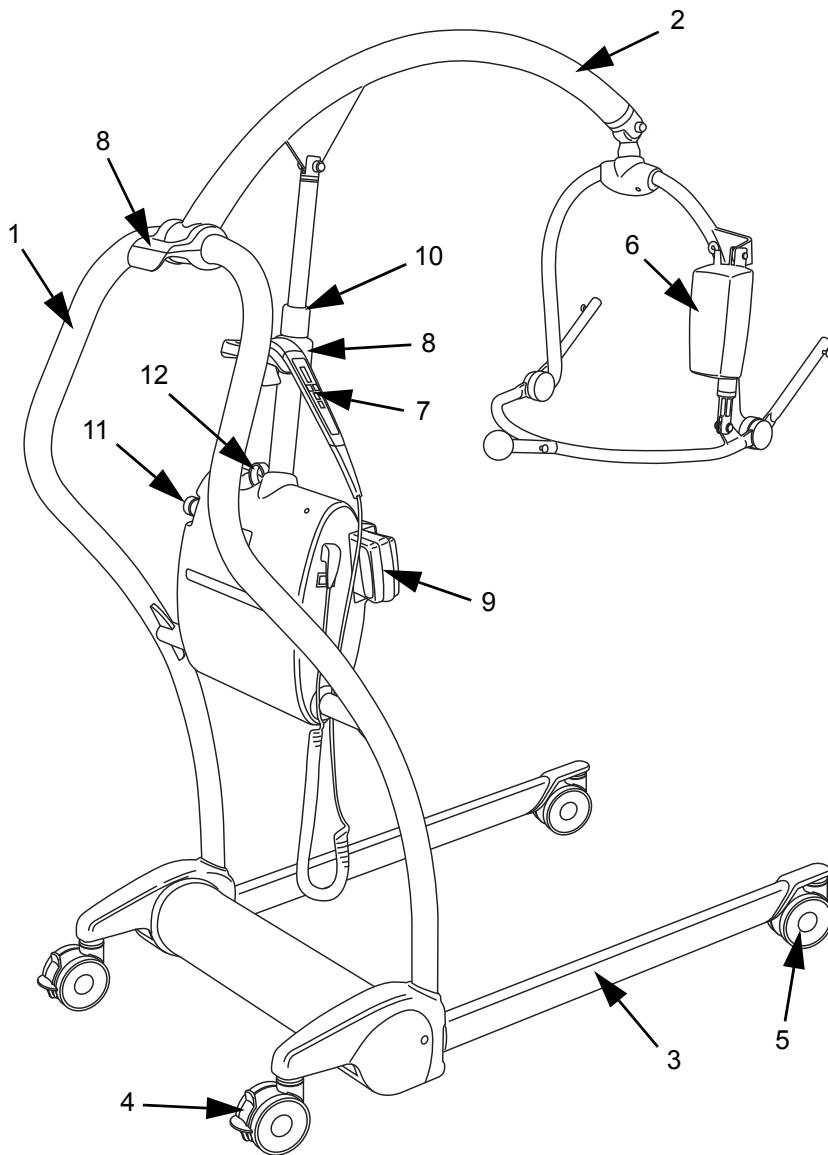


1. Fit the sling to the patient (ensuring correct size is used).
2. Position the Maxi Twin in front of the patient, ensuring the wide part of the spreader bar is at, or just below shoulder level, if necessary open the chassis legs.
3. Attach the sling attachment clips to the appropriate points on the spreader bar.
4. Using the handset raise the patient, adjust the positioning handle until the patient is reclined in the sling.
5. Close chassis legs and transport to chair, bed or toilet.
6. Lower the patient and adjust the positioning handle to bring them into a suitable position.
7. Un-clip the sling attachment clips.
8. Remove the Maxi Twin, making sure patient's feet and body are clear of the lifter.
9. Remove the sling from the patient.

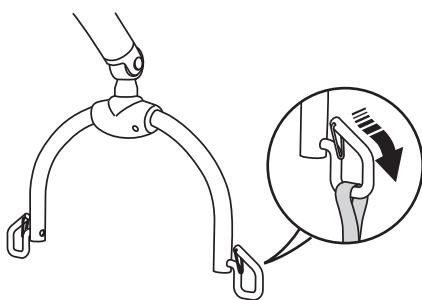


Before operating the Maxi Twin and for full descriptions and instructions on Lifter operations, sling attachment safety warnings, battery charging and care of your Maxi Twin always refer to full operating instructions for your Maxi Twin.

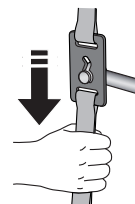
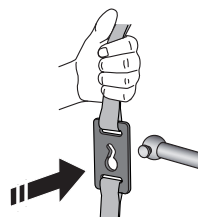
CE
2797



Sling Attachments



Loop



Clip

- | | | |
|-----------------------------------|-----------------------------|--|
| 1. Mast/Lifter manoeuvring handle | 6. Powered DPS spreader bar | 11. Emergency stop button/Reset button |
| 2. Jib | 7. Control handset | 12. System failure lower override |
| 3. Adjustable chassis legs | 8. Handset hang point | |
| 4. Braked castors (rear) | 9. Lifter battery pack | |
| 5. Un-braked castors (front) | 10. Main lift actuator | |

For additional accessories, see operating & product care instructions